



# Mineral Project

Porcelain Stoneware

**BODE**<sup>®</sup>  
CERAMICA



- RESISTENZA ALLA FLESSIONE  
BENDING STRENGTH
- RESISTENZA AL GELO  
FROST RESISTANCE
- RESISTENZA ALL'ATTACCO  
CHIMICO  
RESISTANCE TO CHEMICALS
- RESISTENZA ALLE MACCHIE  
STAIN RESISTANCE
- NATURALE  
ANTISCIVOLO  
ANTI-SLIP
- MONOSPESORE  
SINGLE THICKNESS
- RETTIFICATO  
RECTIFIED
- FORMATI MODULARI  
MODULAR SIZE
- HIGH RIGIDITY
- HEALTHY AND GREEN
- WALL TILES
- FLOOR TILES

# Mineral Project

Porcelain Stoneware



◆ BNR1602KC, BNR4602KC  
Size 600x600mm 24"x24"



# Mineral Project

Porcelain Stoneware



◆ BNR7602KC  
Size 600x600mm 24"x24"



◆ BNR8602KC  
Size 600x600mm 24"x24"

- RESISTENZA ALLA FLESSIONE  
BENDING STRENGTH
- RESISTENZA AL GELO  
FROST RESISTANCE
- RESISTENZA AL L'ATTACCO  
CHIMICO  
RESISTANCE TO CHEMICALS
- RESISTENZA ALLE MACCHIE  
STAIN RESISTANCE
- NATURALE  
ANTISCIVOLO  
ANTI-SLIP
- MONOSPESORE  
SINGLE THICKNESS
- RETTIFICATO  
RECTIFIED
- FORMATI MODULARI  
MODULAR SIZE
- HIGH RIGIDITY
- HEALTHY AND GREEN
- WALL TILES
- FLOOR TILES



# Mineral Project

Porcelain Stoneware



BNR1602K(MATT)  
Size:600x600mm 24"x24"



BNR1602KC(ROCK)  
Size:600x600mm 24"x24"



BNR1602KCP(LAPPATO)  
Size:600x600mm 24"x24"



BNR1602KCM1



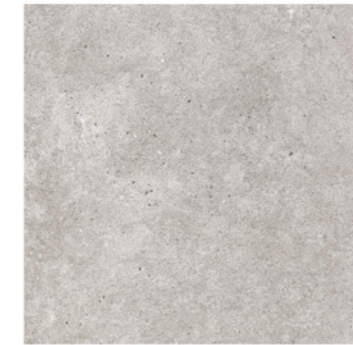
BNR1602KCM2



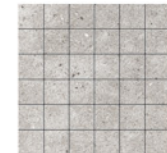
BNR8602K(MATT)  
Size:600x600mm 24"x24"



BNR8602KC(ROCK)  
Size:600x600mm 24"x24"



BNR8602KCP(LAPPATO)  
Size:600x600mm 24"x24"



BNR8602KCM1



BNR8602KCM2



BNR4602K(MATT)  
Size:600x600mm 24"x24"



BNR4602KC(ROCK)  
Size:600x600mm 24"x24"



BNR4602KCP(LAPPATO)  
Size:600x600mm 24"x24"



BNR4602KCM1



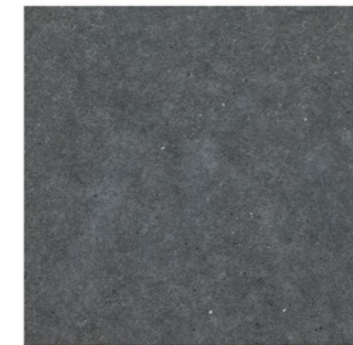
BNR4602KCM2



BNR7602K(MATT)  
Size:600x600mm 24"x24"



BNR7602KC(ROCK)  
Size:600x600mm 24"x24"



BNR7602KCP(LAPPATO)  
Size:600x600mm 24"x24"



BNR7602KCM1



BNR7602KCM2



BNR6602K(MATT)  
Size:600x600mm 24"x24"



BNR6602KC(ROCK)  
Size:600x600mm 24"x24"



BNR6602KCP(LAPPATO)  
Size:600x600mm 24"x24"



BNR6602KCM1



BNR6602KCM2



◆ BNR4602KC  
Size:600x600mm 24"x24"



Guangdong Bode Fine Building Material Co.,Ltd. is a joint venture founded in 2002, specializing in design, exploration and production of various types of building materials for environmental protection. With advanced Italian equipment applied, maximum annual production capacity reaches 20,000,000 square meters. Focusing on high-tech and quality, the company enjoys high prestige. The products are sold all over the world through its network. The company has set up sub-branches

**BODE USA**

**BODE H.K.**

**BODE SHANGHAI BRANCH**

**BODE BEIJING BRANCH**

With the development of these years, Bode has become one of the best ceramics companies in China. Bode welcomes all friends and clients to contact us for further cooperation.



**BODE®**

**GUANGDONG BODE FINE BUILDING MATERIAL CO.,LTD.**

Marketing Center: Buildings 01 And 02 In Central Zone, China Ceramics Industry Headquarters, West Jihua Road, Foshan, Guangdong Province, China  
Tel : (0086) 0757-82526921 / 82526914  
Fax : (0086) 0757-82526923 Post Code : 528000  
Web : [www.Bodestone.cc](http://www.Bodestone.cc)  
E-mail : [bode\\_trading@163.com](mailto:bode_trading@163.com)